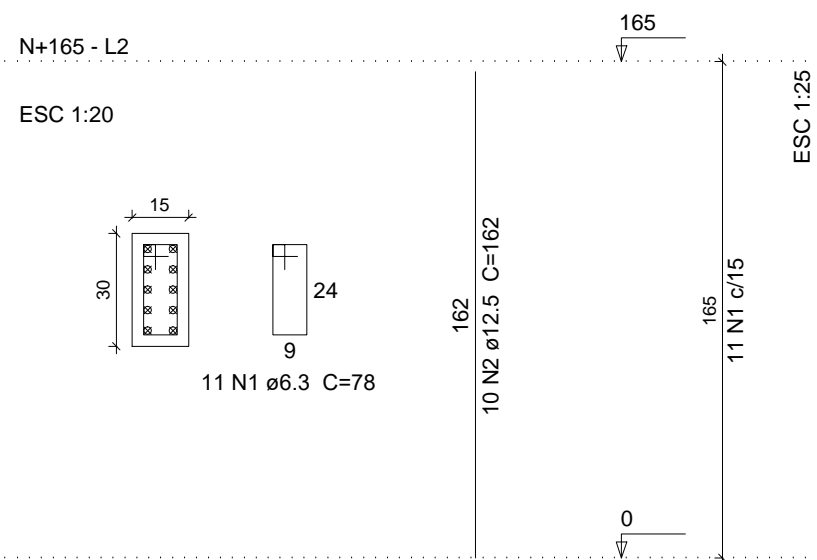
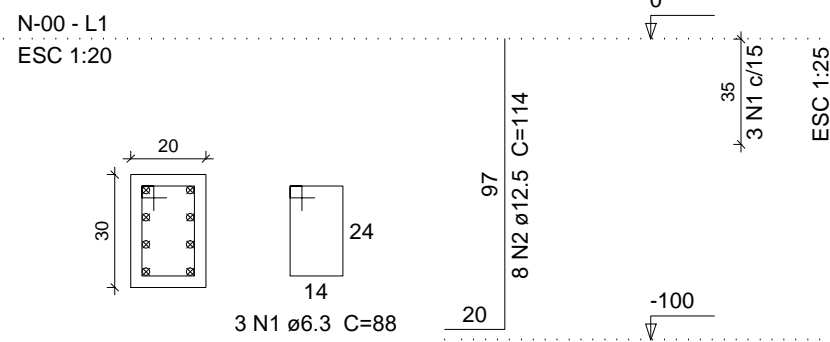


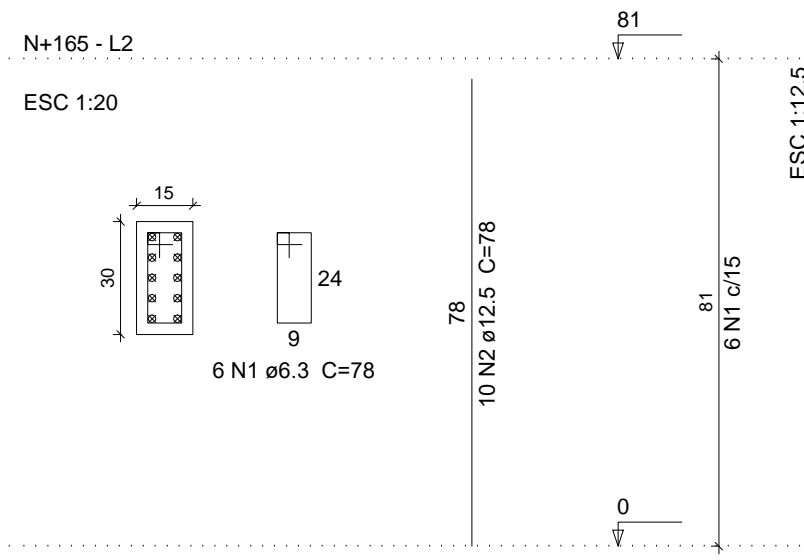
P1R



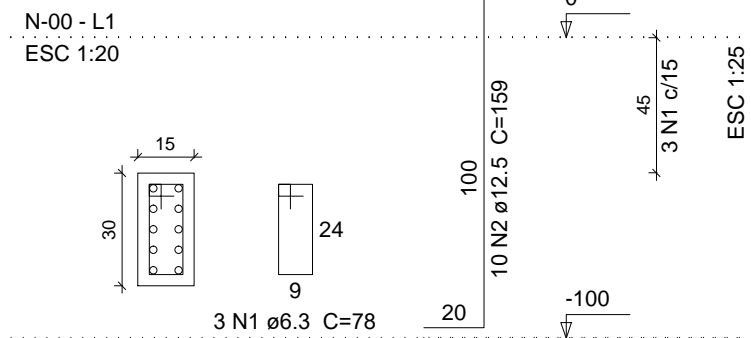
P2R



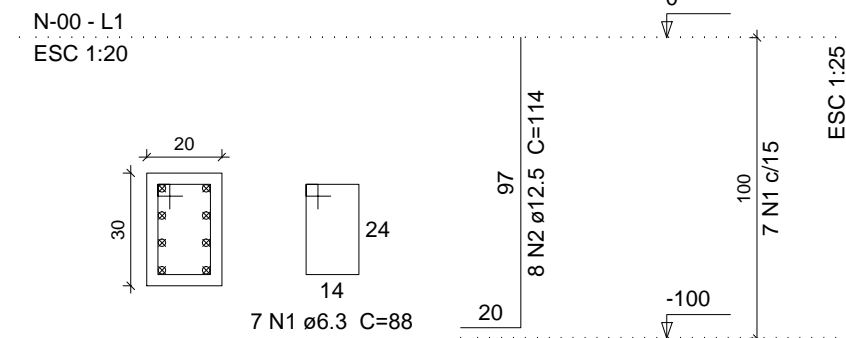
P3R



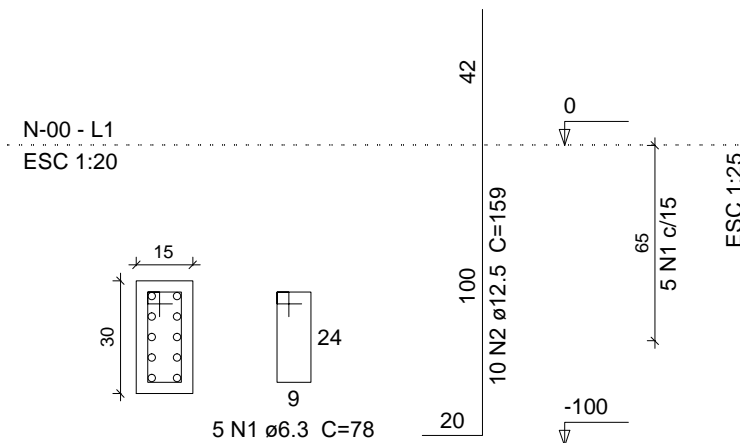
P1R



P6R



P3R



PREFEITURA MUNICIPAL DE
VÁRZEA GRANDE
amar • cuidar • acreditar

PREFEITURA MUNICIPAL DE VÁRZEA GRANDE

Av. Castelo Branco, Espaço Municipal, 2500 - Centro Sul, Várzea Grande/MT

CEP 78125-700 - Fone/Fax: 65 3688 8000

RESPONSÁVEL TÉCNICO

AUTOR DO PROJETO

MARCELO FRANÇA MARTINS
ENGENHEIRO CIVIL
CREA:1014629756D-GO

PROJETO:

ESTRUTURAL - RAMPA ACESSO ADM.

LOCALIZAÇÃO: AVENIDA CASTELO BRANCO, ESQUINA
COM A RUA CAPITÃO COSTA - VÁRZEA
GRANDE MT

ASSUNTO:

ARM. PILARES DA RAMPA

DATA

17/01/2018

UNIDADE:

CENT

ESCALA:

INDICADA

FOLHA:

01/02